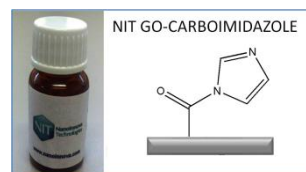
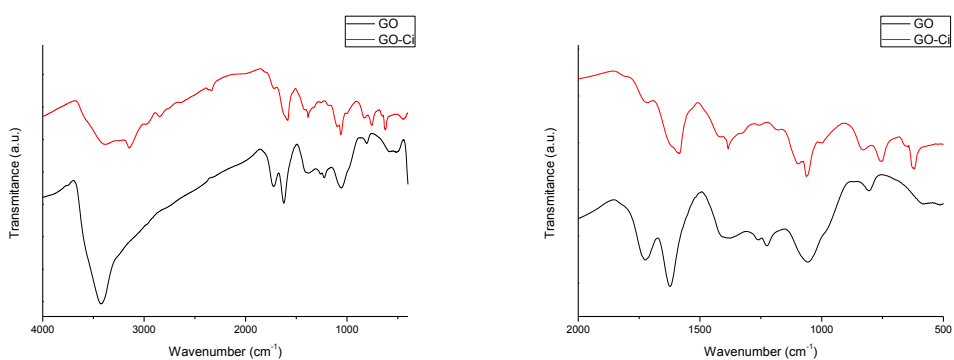


Graphene Oxide-Carboimidazole (NIT GO-Ci) Characterization Sheet

Reported data: FTIR Spectroscopy, Scanning Electron Microscopy, elemental analysis, X-ray diffraction (XRD) and loading of carboimidazole.

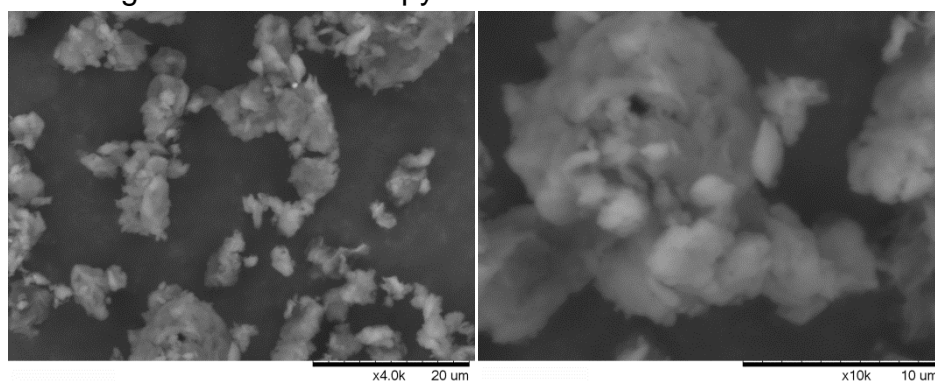


- FTIR Spectroscopy



Left, full spectrum. Right, magnification between 2000 and 500 cm^{-1} .

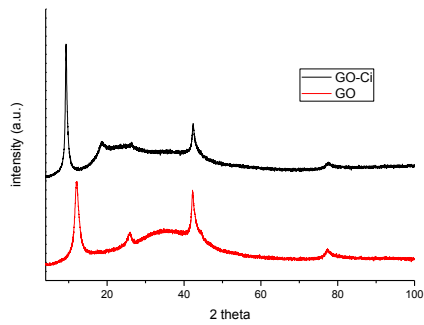
- Scanning Electron Microscopy



- Elemental analysis

	%C	%H	%N	%S
GO	54.9	2.32	0.04	0.8
GO-Ci	54.8	2.76	8.98	0.67

- XRD



Comparison between XRD patterns of graphene oxide and GO-Ci.

- Loading of carboimidazole

In order to estimate the loading of carboimidazole in GO-Ci a coupling reaction with 2-(4-Bromophenyl) ethylamine was performed. The Br amount was quantified by Br microanalysis. The value obtained corresponds to 0.76 mmol/g.